

ASHFORD RING ROAD



ABC O&S

24th July 2012

Bob White

**Development
Planning
Manager**



Menu

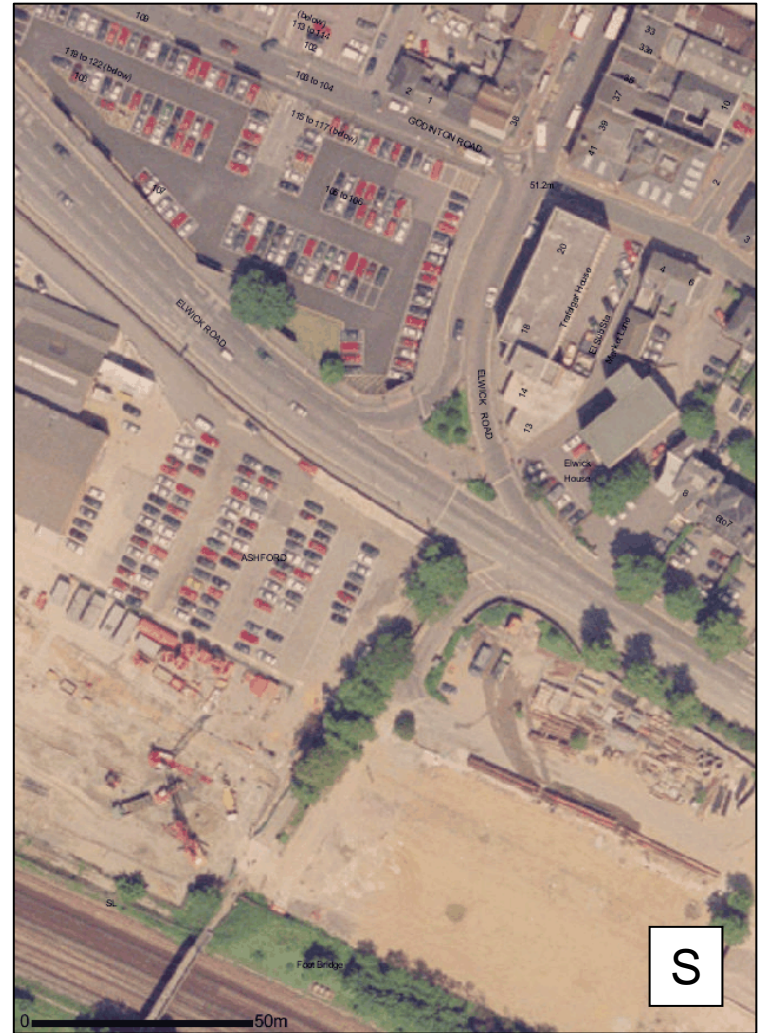


- Introduction to the Ring Road Scheme
 - Shared Space from A to B
- Speed, Opinion and Safety – three years on
 - The Good, the Bad and the Ugly
- You haven't got the complete picture ... yet

Introduction to the Ring Road scheme



“The Race Track” 1999





With thanks to Ashford Borough Council for these photographs



Taming the Track 2007/8



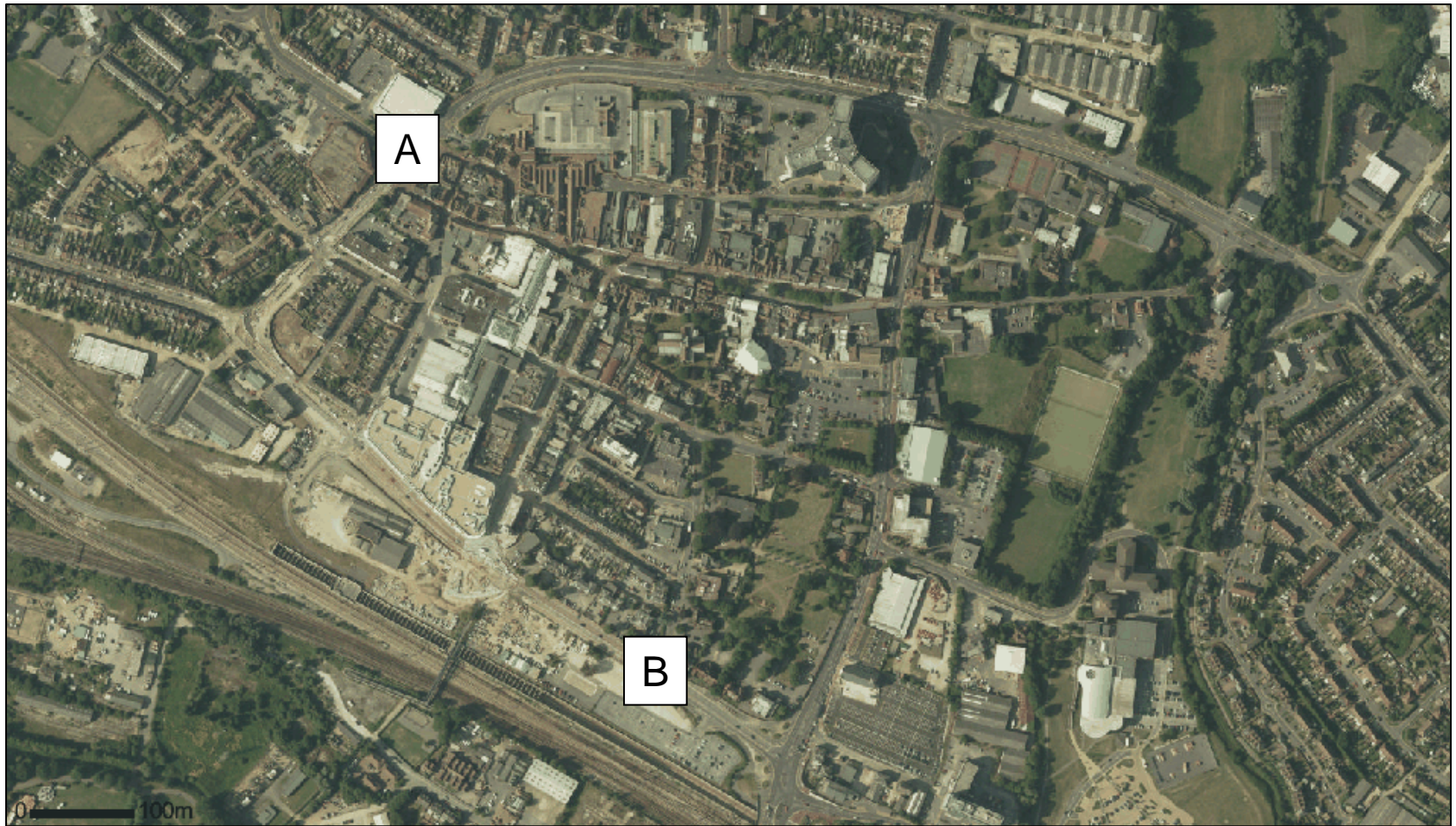
The Early Days 2008



Summer 2011



Shared Space, from A to B











SPEED

SHARED SPACE (MAXIMUM) 12 HOUR TRAFFIC FLOWS AND AVERAGE SPEEDS (mph)

	WEST TRAFFIC	BOUND SPEED	EAST TRAFFIC	BOUND SPEED	TWO TRAFFIC	WAY SPEED
W/DAY – 2009 ¹	4817	20.7	4679	19.9	9432	20.4
SAT – 2009 ²	4772	21.0	4259	20.2	9031	20.6
SUN – 2009 ²	2684	23.6	2922	22.2	5606	22.9
W/DAY – 2010 ³	4694	19.5	5112	20.0	9204	19.4
SAT – 2010 ⁴	4196	20.0	4273	22.2	8469	21.1
SUN – 2010 ⁴	2659	21.6	2048	24.8	4707	23.2
W/DAY – 2011 ⁵	5172	20.1	5506	19.1	10678	19.6
SAT – 2011 ²	4761	19.2	4924	17.7	9685	18.5
SUN – 2011 ⁵	3332	20.9	3090	23.7	6422	22.3

- 1 Eight survey days in July
- 2 Two survey days in July
- 3 Four survey days in June/July
- 4 One survey day in June
- 5 One survey day in July



**Watch their speed:
cyclists seem to
hurry the most**



OPINION



University of the
West of England

Moody, S. and Melia, S. (2011) *Shared space - implications of recent research for transport policy*. Transport Policy . ISSN 0967-070X (Submitted)

	Yes	No	Don't Know	n
Are you ever worried about sharing space in Elwick Square?	72%	23%	5%	144
In this type of setting would you prefer traditional pavements and traffic light crossings?	64%	29%	7%	144
Do you view this square as an area in which you can stop and socialise?	33%	65%	2%	144
As a pedestrian would you make any changes to the layout of Elwick Square?	74%	24%	2%	144
	Yes	No	Same	n
As a pedestrian did you feel safer in the previous scheme?	80%	14%	6%	124
	More	Less	Equal	n
As a pedestrian, do you feel you have more, less or equal priority over vehicles?	19%	78%	3%	144

Table 1 – responses from pedestrian interviews

'I'm a petrolhead too but Clarkson's wrong about shared space'

Local Transport Today 568

PAUL CARTER is a firm supporter of Ashford's innovative shared space scheme on the town's former ring road, and says Britain's biggest motoring pundit was wrong to criticise the project.

"I'm a big supporter of Jeremy Clarkson because I'm a petrolhead as well," jokes Carter, whose hobbies include participating in pre-war sports car races. "But he was wrong on the shared space."

Carter says the decision to build the project was made before he became leader, though he did launch the construction of the scheme. "I remember actually cutting the ribbon when the diggers started. There was a lot of flak and criticism that we were spending far too much public money on this, that it was ill-conceived and the whole thing was going to be a complete disaster.

"I was a bit worried," he confesses. "Then when it was nearing completion there was all sorts of criticism in the press about what a nonsense it was. And I thought, 'Well, before I do any radio interviews about this I'd better go down and have a look.'"



Pedestrians and drivers are supposed to use eye contact to negotiate the shared space on the edge of Ashford town centre

"So on a Sunday afternoon I took the car down there and drove around and I was absolutely gobsmacked – I think it works really well, I like the civic architecture and I think it's something Ashford and we should be very proud of.

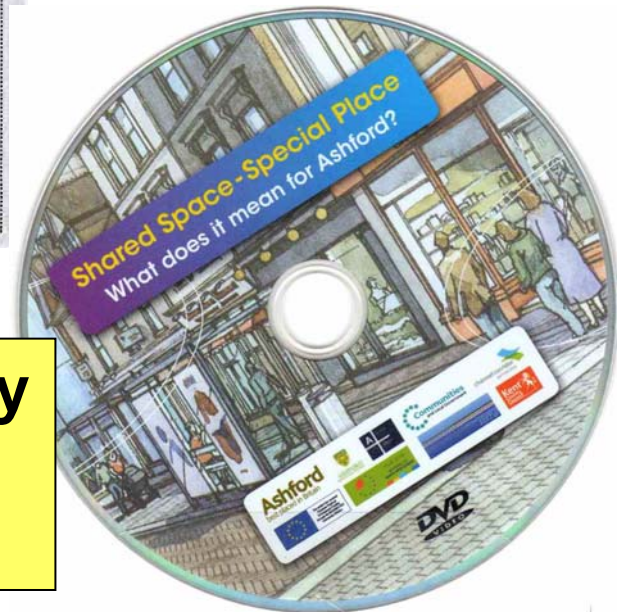
"So far, touch wood, nobody's been

injured. It's so different, it sort of makes you feel slightly insecure because it is so different and because you're insecure you're careful. There's no signposts, no white lines, no nothing. Therefore you feel as though you're almost driving over somebody's private land."

The area is covered by a 20mph limit.

**Political support
at the highest
level has been
sustained ...**

**... but post-construction publicity
has been largely reactive, after
excellent early engagement.**



SAFETY

THREE YEARS BEFORE AND AFTER SAFETY RECORD

LOCATION	Personal Injury Crashes	Casualties	Involving Pedestrians	Involving Cycles	Number of Vehicles
SHARED SPACE – before	14	16	6	1	20
SHARED SPACE – after	7	8	1	2	9
CHANGE	-7	-8	-5	+1	-11
S.E. JUNCTION – before	12	14	2	2	22
S.E. JUNCTION – after	7	11	0	0	13
CHANGE	-5	-3	-2	-2	-9
REMAINDER – before	35	44	8	2	61
REMAINDER – after	22	28	5	4	39
CHANGE	-13	-16	-3	+2	-22
RING ROAD – before	61	74	16	5	103
RING ROAD - after	36	47	6	6	61
CHANGE	-25 (-41%)	-27 (-36%)	-10 (-63%)	+1 (+20%)	-42 (-41%)

Ring Road: 41% reduction in Personal Injury Crashes

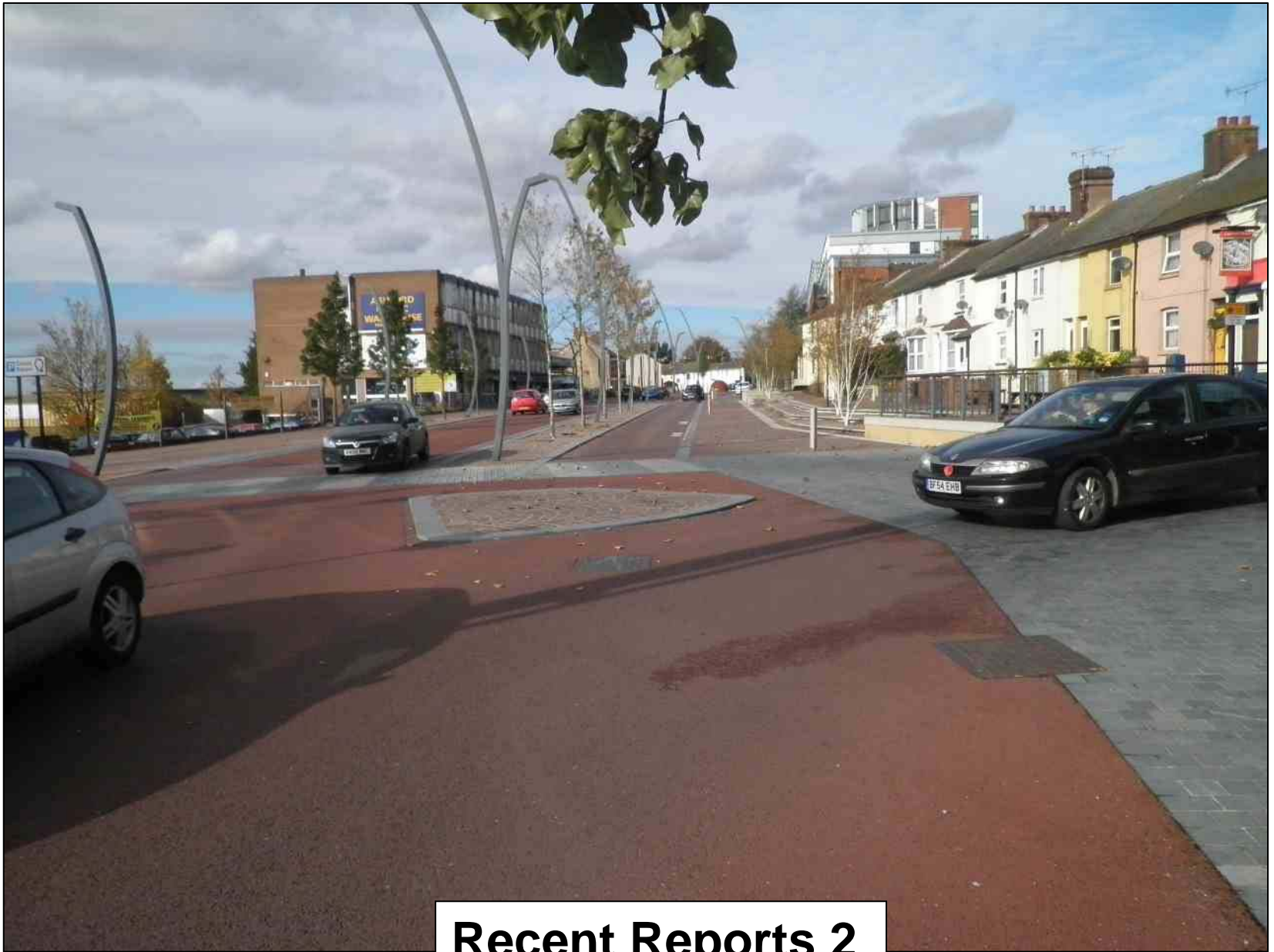
**Shared Space:
50% reduction in Personal Injury Crashes
50% reduction in casualties**

SHARED SPACE PERSONAL INJURY CRASHES

LOCATION	SUMMARY
1. Bank Street, at junction with Tufton Street	Car pulled away from stationary and hit pedestrian walking past closure barrier.
2. Forge Lane, close to New Street junction	Motorcyclist weaving in and out of stationary traffic hit kerb and pillion passenger fell off.
3. Elwick Square (Elwick Road/Bank Street junction)	Cyclist from Bank Street crossed eastbound traffic and hit westbound car.
4. Elwick Square	Westbound car hit lighting column.
5. Elwick Road, between Bank Street and Church Road	Cyclist riding "head down and not looking" hit side of car emerging from private car park.
6. West Street, at junction with Northwood Gardens	Southbound car hit brick wall in central garden. Driver failed breath test.
7. Elwick Road, west of Elwick Square	Passenger fell over as bus pulled away.

Recent Reports 1



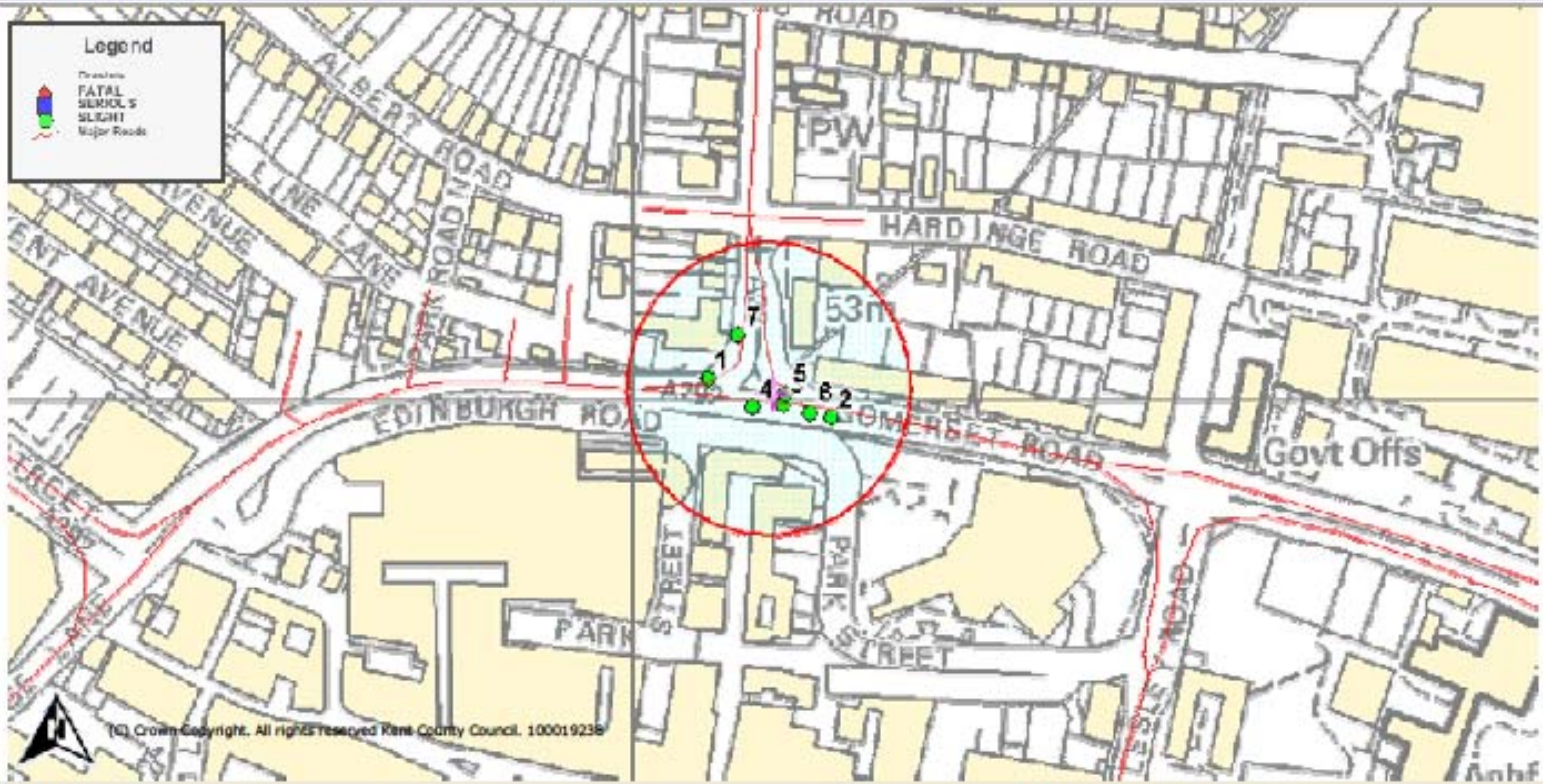


Recent Reports 2

Kent Highway Services - Kentgateway (Asset Information and Street Gazetteer)

Legend

- Crashes
- FATAL
- SERIOUS
- SLIGHT
- Major Roads



Comments :

Title :	Ashford, Site 79, 3 years up to June 11
Map centre :	601067,143003
Printed On :	05/09/2011
Scale :	1:3000



North Street/Somerset Road

The Good, the BAD and the UGLY: Hard Lessons

- **Materials** – cost, source, appropriateness
- **Maintenance** – funding, overrunning, staining
- **Access Groups** – be ready to discuss lingering concerns
- **Communication** – champion the good outcomes as much as the ideas



Maintenance – Position Statement

“We are aware that there are a number of maintenance issues that have come to light since the scheme was completed and fully open to traffic. In some areas, where these issues have caused safety concerns, we have had to carry out temporary repairs. To establish the causes and most appropriate remedial actions, we are commissioning a full investigation of the maintenance issues this summer. Once the investigation has been completed, we will be able to programme the necessary remedial works and permanent repairs.”

The GOOD, the Bad and the Ugly: Celebrating Success



- **Safety** – a significant improvement
- **Speed** – around 20mph, even with limited pedestrian movement
- **Decluttering** – spot the guard railings, if you can

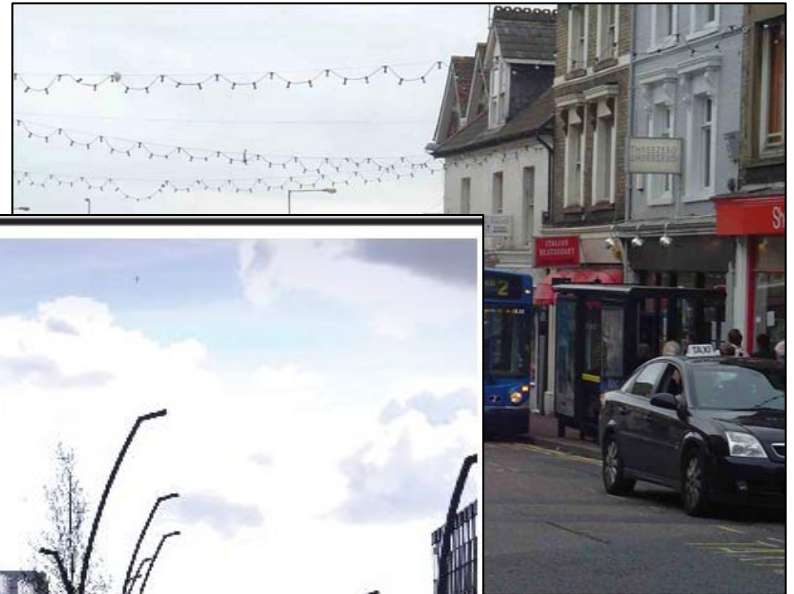


The GOOD, the Bad and the Ugly: Celebrating Success



- **Elwick Square – a civic space waiting for civic activities**
- **Publicity – Ashford is well and truly on the Public Realm map**
- **Value – yet to be evaluated, yet to be fully realised**
- **Potential – the best is yet to come**





Celebrating the success of sharing road space

By Mathew Beech
mathew.beech@fordstark.co.uk

COUNCIL chiefs have praised the town's often controversial shared space scheme for reducing the number of crashes in the town centre, nearly three years after it was implemented.

At a council meeting last week, councillors discussed the success the area, from Elwick Road to the junction with New Street, has had in making the town safer.

Since being opened in November 2008, there have been only two crashes in the shared space area, compared to 13 in the previous three years.

In the first quarter of this year, there have been no recorded incidents at all.

In Bank Street, which was also refurbished as part of the scheme, the number of crashes over the last 36 months is two, compared to four over the previous three years.

In the shared space zone, which is a designated 20mph

area, the speed of traffic has also slightly fallen since it has been open. In December 2008, the average speed was more than 21 mph, this is now 19.8mph in the west-bound direction.

It is thought the additional traffic through the town, which is up from 9,838 vehicles to 12,164, has contributed to the slight decrease in average speeds.

Despite the full three year review period still being incomplete, councillors have been given an "encouraging indication" that crash rates are much reduced in the shared space, confounding critics, including Top Gear's Jeremy Clarkson, who claimed the scheme would lead to more incidents.

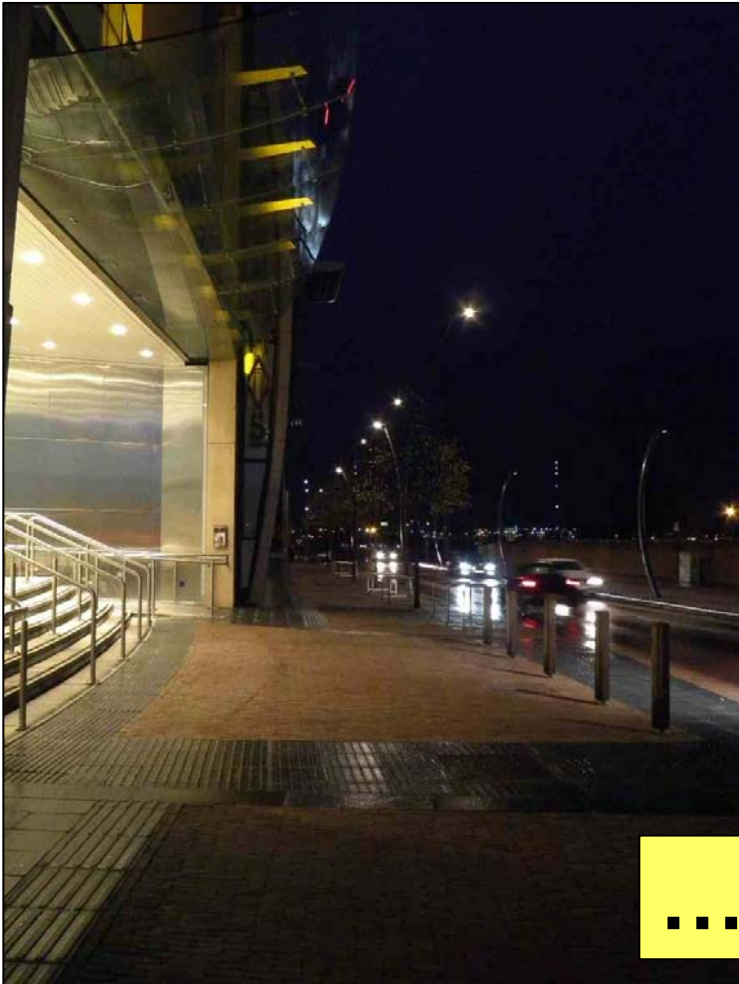
As part of the shared space initiative, the old ring road was converted from a one way system to a two way street, which has also largely been seen as a positive move, with personal injury crashes falling by a third when compared to the previous three year period.



Kent on Sunday



You haven't got the complete picture ...



... yet



bob.white@kent.gov.uk

The Final Word:
Paul Carter
Leader, Kent County Council



LTT 268

***“... it sort of makes
you feel insecure
because it is so
different and
because you’re
insecure you’re
careful.”***

***“... I think it’s
something Ashford
and we should be
very proud of.”***